



Fastmarkets Dashboard Release Notes

14th January 2020

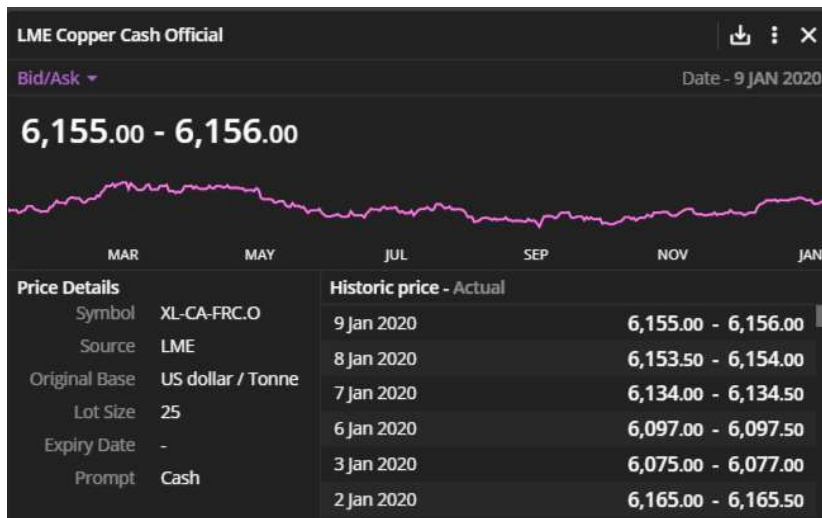
Version 1.4.971

What's New?

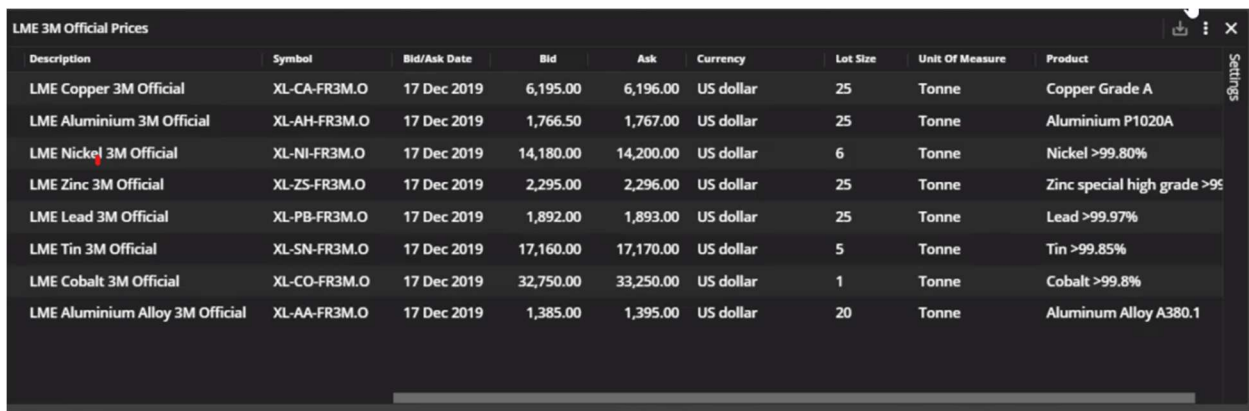
1. Exchange prices

One of the key new features of this release is the ability to display exchange benchmark prices (LME, CME (COMEX/NYMEX), SHFE) alongside physical prices in the existing widgets. Previously, this data has only been available through pre-configured widgets but now you will be able to create your own Price Tile, Price Chart, Multi Price Table and Historic Price Table widgets with a combination of physical and exchange prices.

Price Tile widget example: LME Copper Cash Official Price



Multi Price Table widget example: LME 3M prices



Description	Symbol	Bid/Ask Date	Bid	Ask	Currency	Lot Size	Unit Of Measure	Product
LME Copper 3M Official	XL-CA-FR3M.O	17 Dec 2019	6,195.00	6,196.00	US dollar	25	Tonne	Copper Grade A
LME Aluminium 3M Official	XL-AH-FR3M.O	17 Dec 2019	1,766.50	1,767.00	US dollar	25	Tonne	Aluminium P1020A
LME Nickel 3M Official	XL-NI-FR3M.O	17 Dec 2019	14,180.00	14,200.00	US dollar	6	Tonne	Nickel >99.80%
LME Zinc 3M Official	XL-ZS-FR3M.O	17 Dec 2019	2,295.00	2,296.00	US dollar	25	Tonne	Zinc special high grade >95
LME Lead 3M Official	XL-PB-FR3M.O	17 Dec 2019	1,892.00	1,893.00	US dollar	25	Tonne	Lead >99.97%
LME Tin 3M Official	XL-SN-FR3M.O	17 Dec 2019	17,160.00	17,170.00	US dollar	5	Tonne	Tin >99.85%
LME Cobalt 3M Official	XL-CO-FR3M.O	17 Dec 2019	32,750.00	33,250.00	US dollar	1	Tonne	Cobalt >99.8%
LME Aluminium Alloy 3M Official	XL-AA-FR3M.O	17 Dec 2019	1,385.00	1,395.00	US dollar	20	Tonne	Aluminum Alloy A380.1

Multi Price Table widget example: combination of exchange and physical prices

Description	Symbol	Date	Low/Bid	Mid	High/Ask	Product
LME Copper Cash Official	XL-CA-FRC.O	17 Dec 2019	6,174.00	-	6,175.00	Copper Grade A
Copper grade A cathode premium, cif Rotterdam, \$/tonne	MB-CU-0369	03 Dec 2019	40.00	45.00	50.00	Copper grade A
Copper grade A cathode premium, cif Shanghai, \$/tonne	MB-CU-0403	06 Dec 2019	56.00	62.00	68.00	Copper grade A
Copper grade A cathode premium, in-whs Shanghai, \$/tonne	MB-CU-0405	06 Dec 2019	65.00	70.00	75.00	Copper grade A

Price Chart widget example: LME aluminium contracts



Historic Price Table widget example: combination of exchange and physical prices

LME Copper 3M Official price and Copper premia				
	XL-CA-FRC.O	MB-CU-0369	MB-CU-0403	MB-CU-0405
Date	Mid	Mid	Mid	Mid
08 Jan 2020	6153.75	45	40.5	53.5
07 Jan 2020	6134.25	45	40.5	53.5
06 Jan 2020	6097.25	45	41.5	55
03 Jan 2020	6076	45	41.5	55
02 Jan 2020	6165.25	45	44	57.5
01 Jan 2020	6155.75	45	44	57.5
31 Dec 2019	6155.75	45	44	57.5
30 Dec 2019	6183.25	45	45.5	58.5
27 Dec 2019	6210.5	45	48.5	60.5

Please note that there are some functionalities which are not yet available for exchange prices.

- Widgets which only contain exchange prices cannot be converted
- Widgets which contain a combination of exchange and physical prices can be converted but the conversion will only be applied to the physical prices.
- Copy for Excel Add-in functionality is not yet available for widgets which contain exchange prices. However, Price Tile, Price Chart, Multi Price Table and Historic Price Table widgets can be copied as values only or exported as XLS / CSV.
- Pre-configured exchange price widgets cannot be converted or exported yet.
- The Expiry date field is only available currently for COMEX and NYMEX instrument. In the future this field will be available for SHFE and LME instruments as well.
- Change and % change fields are not yet available for exchange prices.
- It's not yet possible to save exchange prices to your favorites.

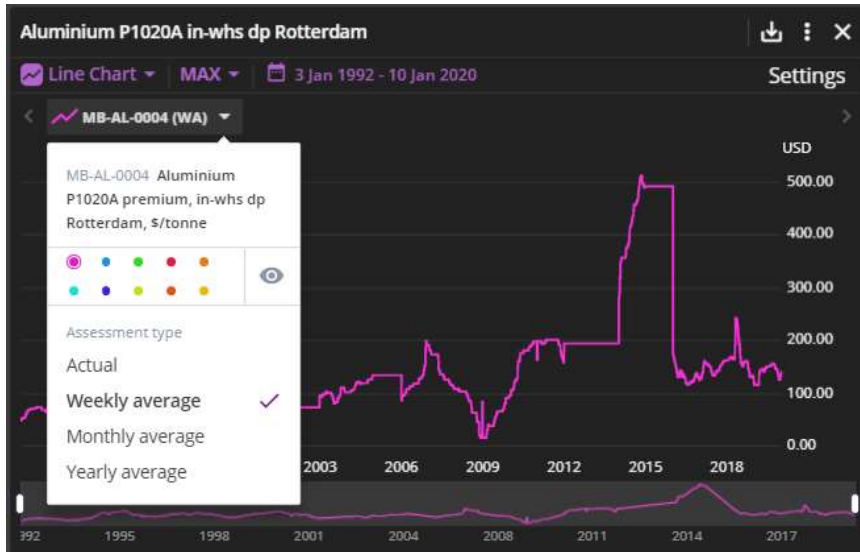
2. Published averages

This version will enable you to display published averages in Price Chart, Multi Price Table and Historic Price table widgets. Previously, this data has only been available in the Price Tile widget.

Multi Price table example:

Aluminium P1020 monthly averages					Settings
Description	Symbol	Monthly Average Assessment Period	Monthly Average	Monthly Average Change %	
Aluminium P1020A premium, in-whs dp Rotterdam, \$/tonne	MB-AL-0004	Dec 2019	132.78	1.27%	
Aluminium P1020A monthly average midpoint, spot premium...	MB-AL-0293	Dec 2019	73.40	-0.54%	
Aluminium P1020A premium, ddp Midwest US, \$/lb	MB-AL-0232	Dec 2019	0.16	-6.06%	
Aluminium P1020A premium, cif dup Brazilian main ports, \$/...	MB-AL-0022	Dec 2019	150.84	-2.69%	
Aluminium P1020A premium, delivered Sao Paulo region, \$/t...	MB-AL-0021	Dec 2019	210.00	-2.33%	
Aluminium P1020A premium, ddp Midwest US, US cents/lb	MB-AL-0020	Nov 2019	16.46	-6.74%	

Price Chart widget example



Historic Price Table widget example:

Historic Price Table

1Y | 10 Jan 2019 - 10 Jan 2020 | Monthly average

Date	Price	MB-CU-0369	MB-CU-0403
Dec 2019	Low	40	50.35
	Mid	45	56.5
	High	50	62.65
Nov 2019	Low	40	63
	Mid	45	68.57
	High	50	74.14
Oct 2019	Low	40	68.96
	Mid	45	75.63
	High	50	82.3

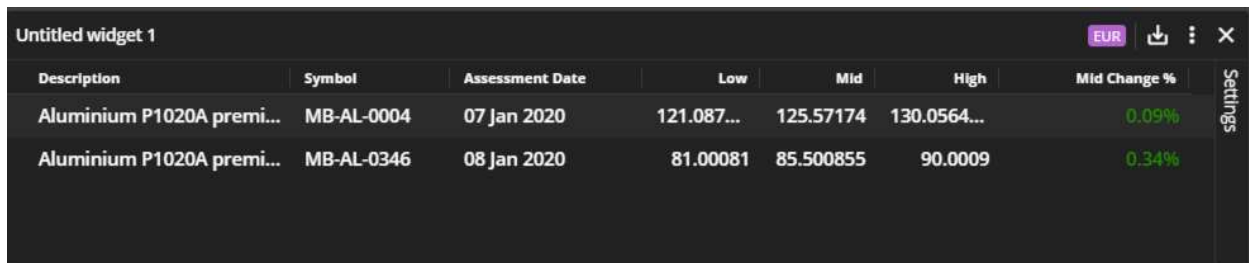
3. Maximum number of prices in a Price Chart widget

This version will enable you to display up to 8 instruments in a Price Chart widget. This has been increased from the previous maximum of 5 instruments giving you the possibility to display a larger set of instruments in a single view. We have also re-designed the field selection control to make it really easy to use. You can now choose from displaying Low or Mid or High or Low & High fields.

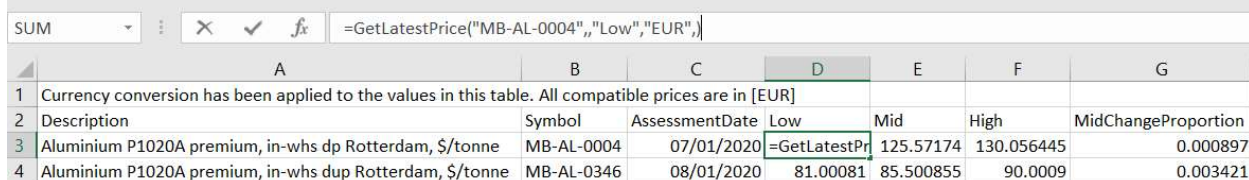


4. Conversion

This version will enable you to export a converted widget into Excel either as a flat file or using the Fastmarkets Excel add-in functions.



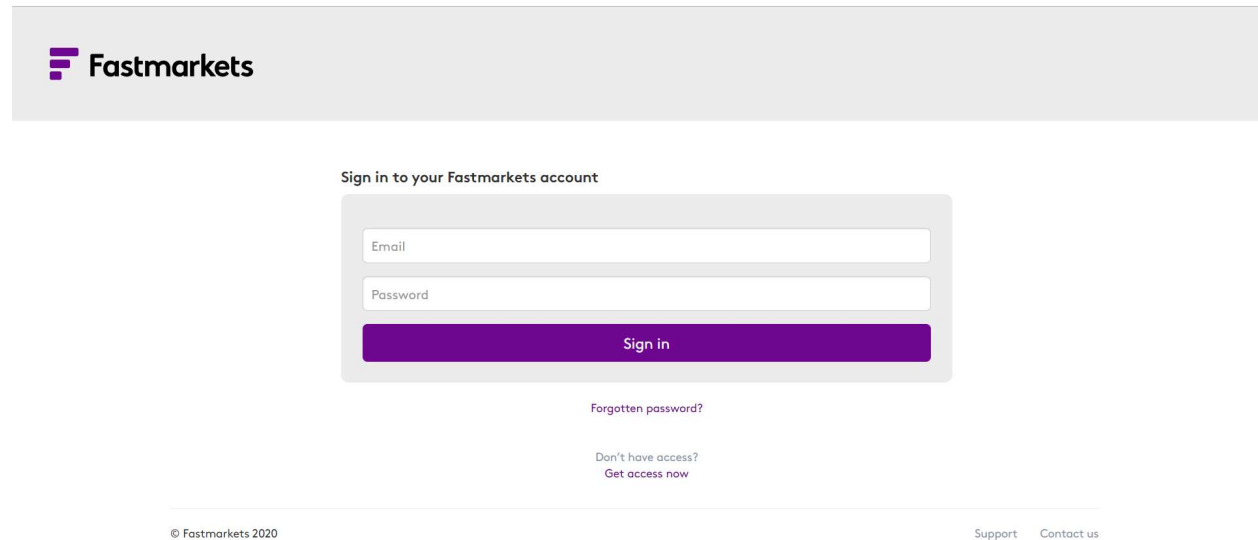
Description	Symbol	Assessment Date	Low	Mid	High	Mid Change %
Aluminium P1020A premi...	MB-AL-0004	07 Jan 2020	121.087...	125.57174	130.0564...	0.09%
Aluminium P1020A premi...	MB-AL-0346	08 Jan 2020	81.00081	85.500855	90.0009	0.34%



	A	B	C	D	E	F	G
1	Currency conversion has been applied to the values in this table. All compatible prices are in [EUR]						
2	Description	Symbol	AssessmentDate	Low	Mid	High	MidChangeProportion
3	Aluminium P1020A premium, in-whs dp Rotterdam, \$/tonne	MB-AL-0004	07/01/2020	=GetLatestPr	125.57174	130.056445	0.000897
4	Aluminium P1020A premium, in-whs dup Rotterdam, \$/tonne	MB-AL-0346	08/01/2020	81.00081	85.500855	90.0009	0.003421

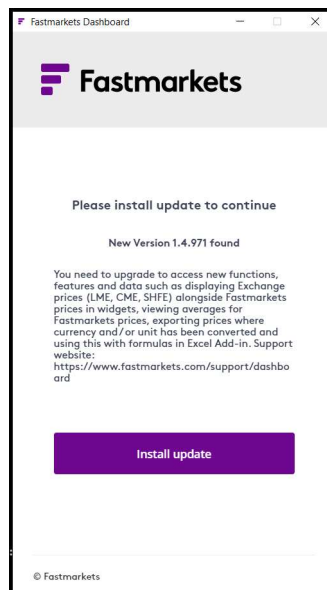
5.Improved login page

Our new login page will provide you with a set of help features should you experience any issues. The ‘Don’t have access? Get access now’, ‘Support’ and ‘Contact us’ links will take you directly to different areas of our support pages where you can get assistance.



6. Release notes in the installer window

When a new version becomes available, you will be notified at login and you will find a short summary of the new features within the login window to keep you always up to date.



Breaking Changes

There are no breaking changes with this release.

Previous Versions

Fastmarkets Excel Add Version	Release Date
Fastmarkets Dashboard v1.4.917	03/12/2019
Fastmarkets Dashboard v1.4.819	24/10/2019
Fastmarkets Dashboard v1.4.762	21/03/2019

Further help

If, after reading these instructions you have further questions about how to use Fastmarkets' Excel Add-in, please contact your Account Manager.

- **Europe, Middle East and Africa: +44 (0)20 7779 8787**
- **Asia: +65 64 221 480**
- **Americas: +1 312 366 2542**
- **Email: customersuccess@fastmarkets.com**

For more information on Fastmarkets' products and services, please use the following links.

- **Pricing data:** <https://www.fastmarkets.com/what-we-do/pricing-data>
- **Pricing notices:** <https://www.metalbulletin.com/prices/pricing-notices.html>
- **Methodology:** <https://www.fastmarkets.com/about-us/methodology>